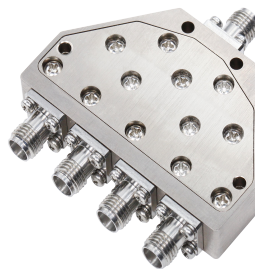


## Features

- It can realize the customized design scheme
- Excellent amplitude and phase consistency
- Low loss and High isolation

## Typical Applications

- Mobile communication field
- GSM,LTE,5G
- Satellite radar, electronic countermeasures
- Test equipment



## Electrical&Mechanical Specifications

Parameter		Min.	Typ.	Max.	Units	
Frequency Range		DC		26.5	GHz	
Insertion Loss			14	15	dB	
Isolation		9	10		dB	
Input VSWR			1.4	1.6	: 1	
Output VSWR			2	2.4	: 1	
Amplitude Imbalance			±0.3	±0.5	dB	
Phase Imbalance			±5	±7	deg	
Power Rating	Forward Power	10				W
	Reverse Power					
	Peak Power					
Impedance		50				Ohms
Weight		NA				Ounces
Input / Output Connectors		S M A – Female				
Material		Aluminum				
Finish		Oxidation sandblasting				

### Environmental Specifications

Operational Temperature	-40°C~+85°C
Storage Temperature	-50°C~+105°C
Altitude	30,000 ft. (Epoxy Sealed Controlled environment)
	60,000 ft. 1.0psi min (Hermetically Sealed Un-controlled environment) (Optional)
Vibration	25gRMS (15 degrees 2KHz) endurance, 1 hour per axis
Humidity	100% RH at 35°C, 95%RH at 40°C
Shock	20G for 11msec half sine wave, 3 axis both directions

### Outline Drawing:

All Dimensions in mm (inches)

Outline Tolerances  $\pm 0.5(0.02)$

Mounting Holes Tolerances  $\pm 0.2(0.008)$

