

6.57-9.99GHz Standard Gain Horn Antenna with WR112 Waveguide Port P/N: YX-SGH-112-20**Features**

- Covering frequencies from 6.57 to 9.99GHz
 - Directional,linear
- Polarization

Typical Applications

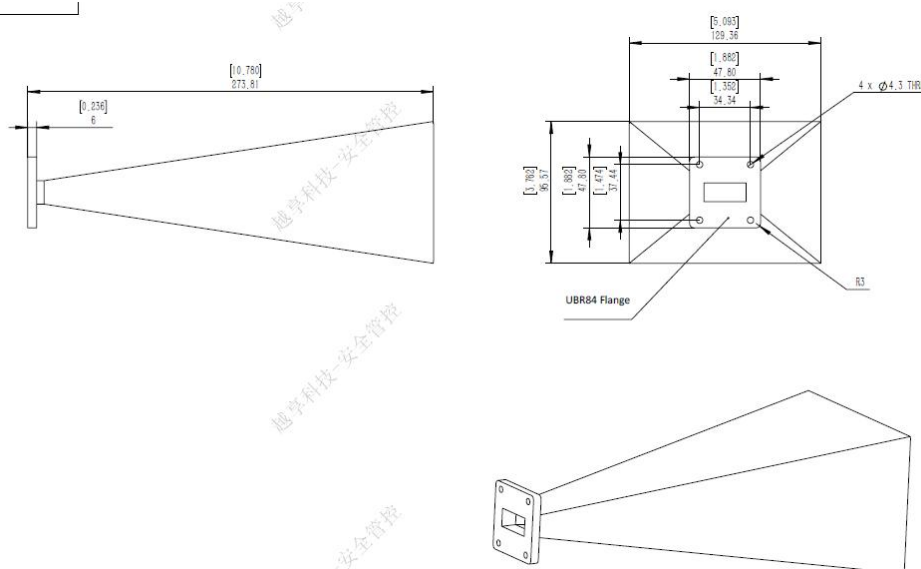
- EMI detection, direction finding, and reconnaissance
- Measurement of antenna gain and pattern

**Electrical & Environmental Characteristics**

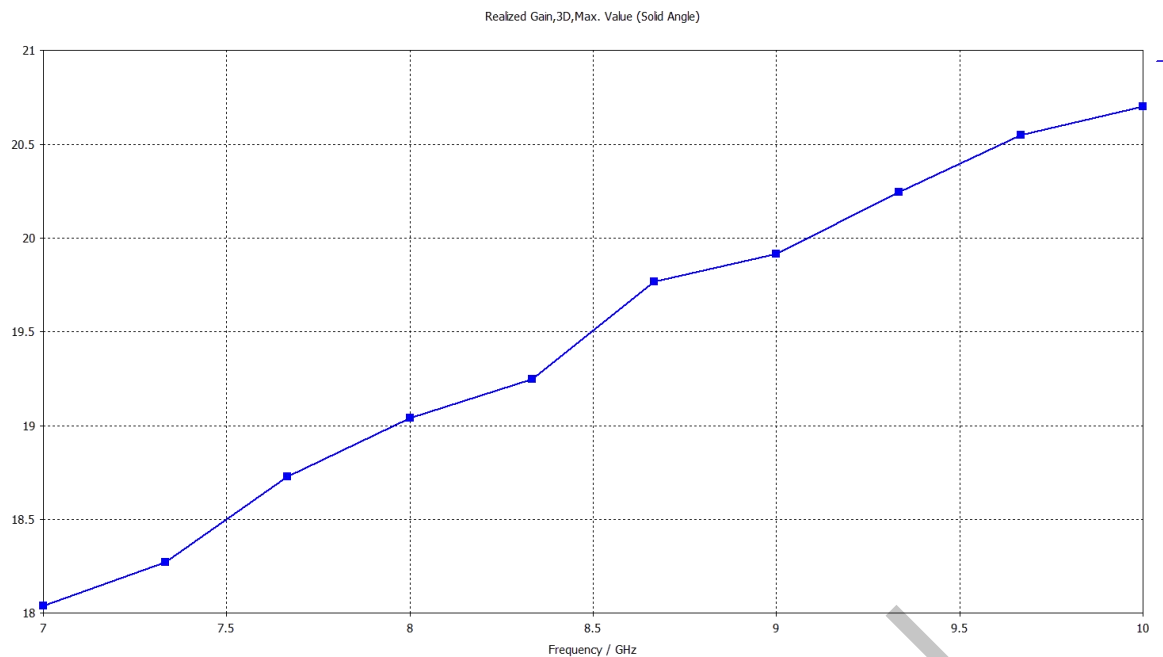
Operating Frequency	6.57-9.99 GHz
Gain	20dB typical
VSWR	1.25 max
3dB Beamwidth-Horizontal	15.8~23 degrees
3dB Beamwidth-Vertical	15.8~22.5 degrees
Specification Temperature	+25°C
Operating Temperature	-40°C~+85°C

Mechanical Specifications

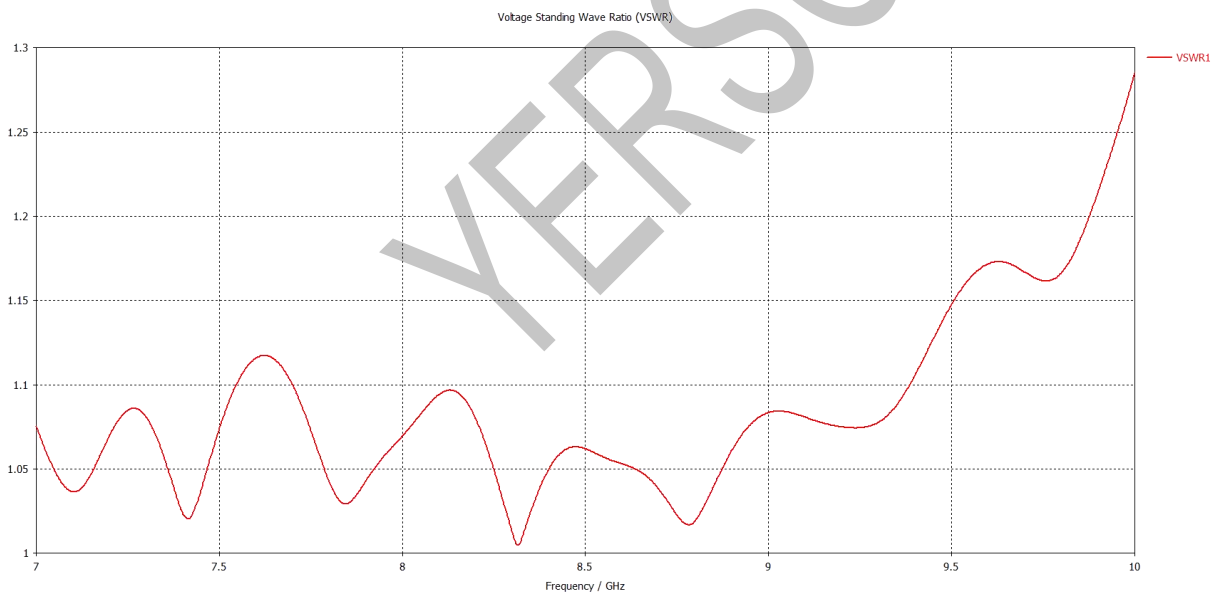
Waveguide Option	WR112
Flange	UBR84(FBP84)
Material	Aluminum
Inside Finish	Oxidation inside
Outside Finish	Blue/Gray painting(Optional)
Weight	/
Sizes (mm)	95.57*129.36*273.81mm

Outline Drawing(Unit:mm)

Gain VS Frequency Plots



Input VSWR VS Frequency



Notice: All of the above data is simulation for reference.