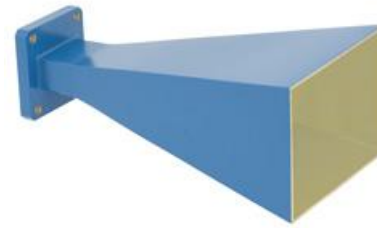


## Features

- Covering frequencies from 14.5 to 22GHz
- Directional,linear Polarization
- Reliable gain, low standing wave.
- Lightweight, high reliability, and long lifespan



## Typical Applications

- EMI detection, direction finding, and reconnaissance
- Measurement of antenna gain and pattern



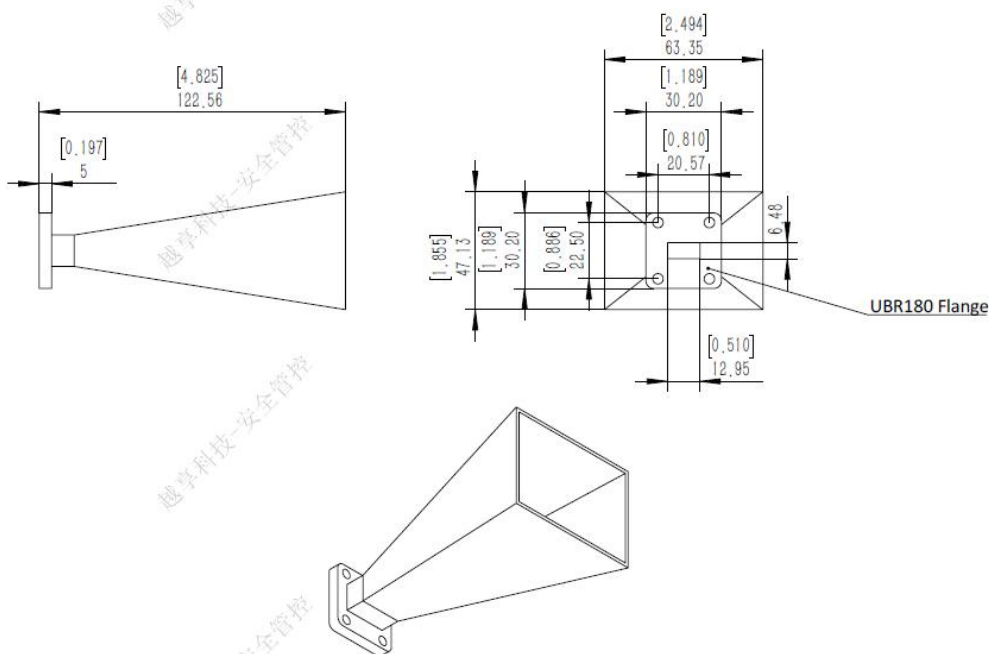
## Electrical & Environmental Specifications

Operating Frequency	14.5-22 GHz
Gain	20dB typical
VSWR	1.25 max
Specification Temperature	+25°C
Operating Temperature	-40°C~+85°C

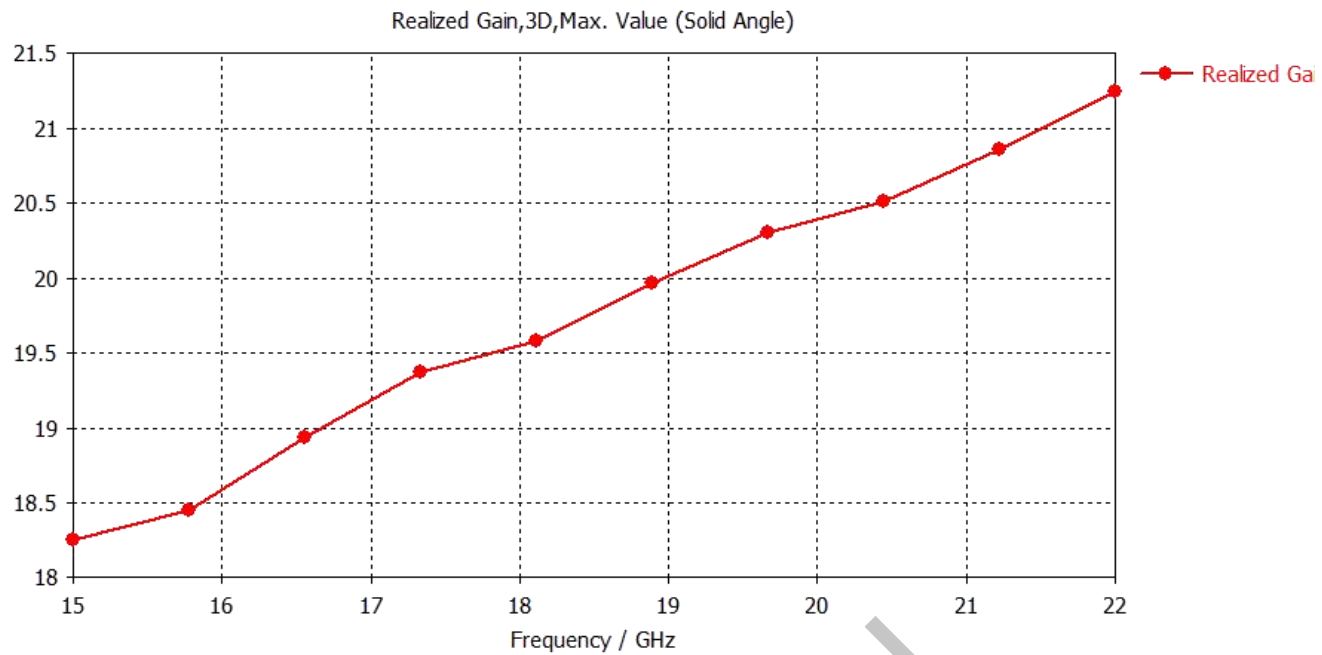
## Mechanical Specifications

Waveguide	WR51
Flange	UBR180(FBP180)/Optional
Material	Aluminum/Brass
Inside Finish	Chromat
Outside Finish	Blue/Gray painting(Optional)
Weight	/
Sizes (mm)	47.13*63.35*122.56mm

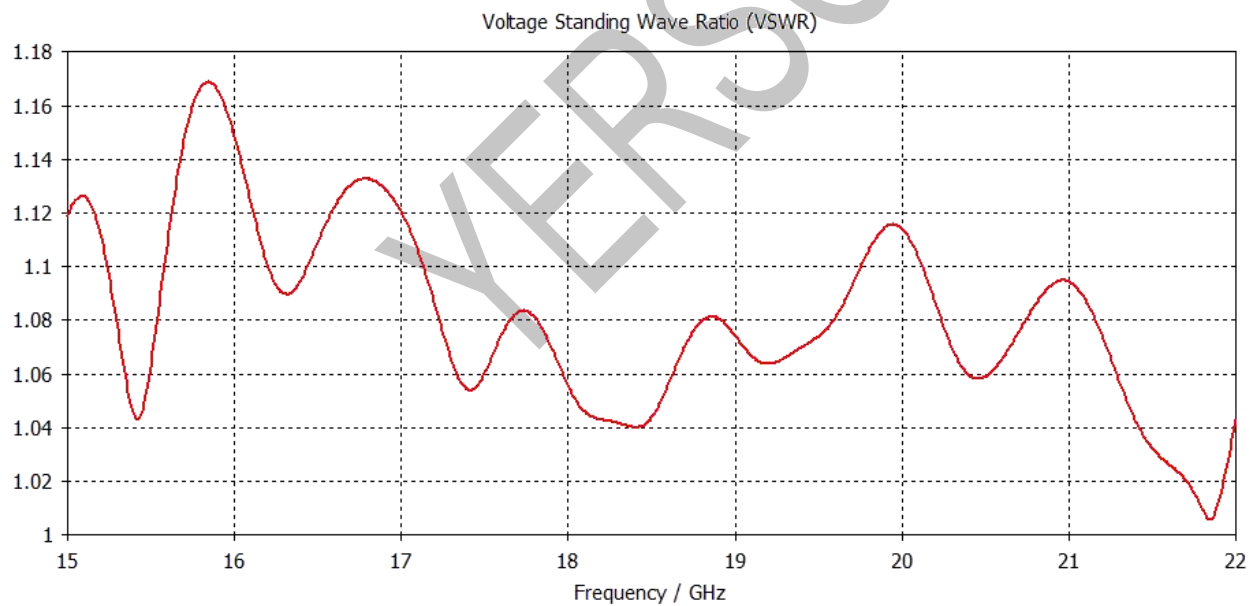
## Outline Drawing(Unit:mm)



## Gain VS Frequency Plots



## Input VSWR VS Frequency



Notice: All of the above data is simulation for reference.

YERSON and its affiliates reserve the right to make changes to the products or information contained herein without prior notice. Please visit [www.yersontech.com](http://www.yersontech.com) for additional datasheets and product information.