

75-110GHz Standard Gain Horn Antenna with WR10 Waveguide Port P/N: YX-SGH10-20**Descriptions:**

Model **YX-SGH10-20** is a standard gain horn antenna that operates from 75 to 110 GHz, it is linear polarization, The RF port is equipped with waveguide flange which is optional.

**Features:**

- Wideband Frequency, High Gain
- Excellent Directionality, linear Polarization
- Lightweight, high reliability, and long lifespan

Applications:

- Antenna Communication System
- Antenna Measurement and Calibration
- Research and Experimentation

**Electrical & Environmental Characteristics**

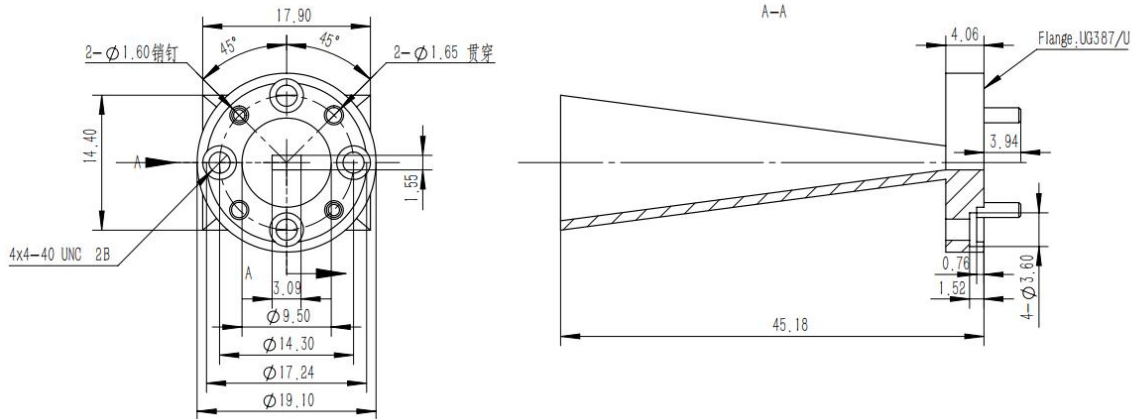
Frequency	75-110GHz
Gain	20 dB typical
VSWR	2.0 max
Polarization	Linear
E-Plane 3 dB Beamwidth	17 to 12 degrees
H-Plane 3 dB Beamwidth	20 to 12 degrees
Cross Polarization	-25dB max
Specification Temperature	+25°C
Operating Temperature	-40°C~+85°C

Mechanical Specifications

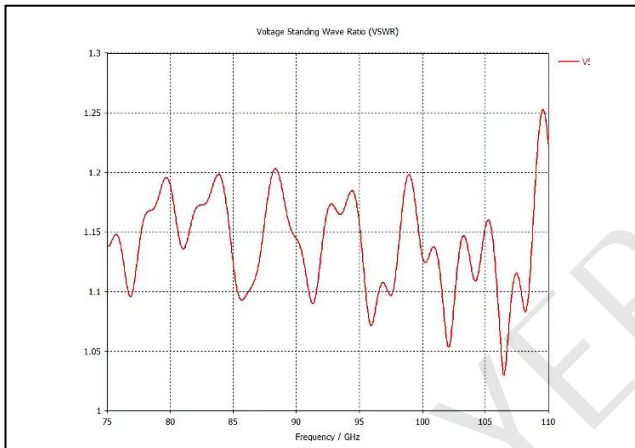
Antenna Port	WR10 Waveguide
Flange	UG387/U(Optional)
Material	Brass
Finishing Inside and Outside	Gold plating inside and outside
Size	Φ 19.1*45.18 mm
Weight (approx.)	/

75-110GHz Standard Gain Horn Antenna with WR10 Waveguide Port P/N: YX-SGH10-20

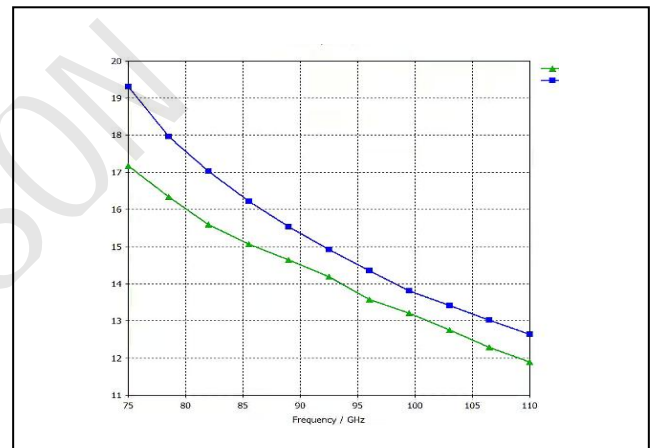
Outline Drawing(Unit:mm):



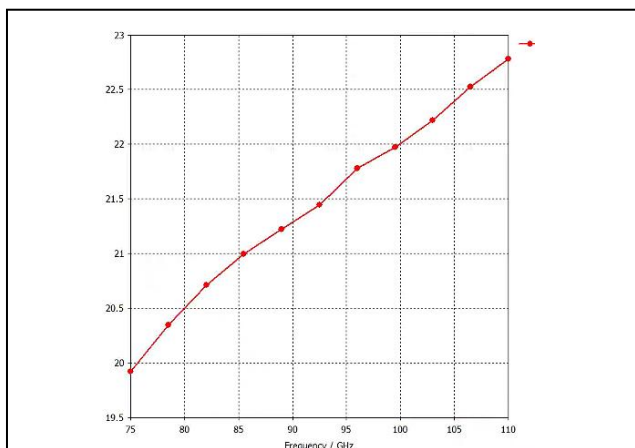
VSWR VS Frequency



3dB Beamwidth



Gain VS Frequency Plots



Notice: All of the above data is simulation for reference.

YERSON and its affiliates reserve the right to make changes to the products or information contained herein without prior notice. Please visit www.yersontech.com for additional datasheets and product information.