

**60-90GHz Standard Gain Horn Antenna with WR12 Waveguide Port P/N: YX-SGH12-25****Descriptions:**

Model **YX-SGH12-25** is a standard gain horn antenna that operates from 60 to 90 GHz, it is linear polarization, The RF port is equipped with waveguide flange which is optional.

**Features:**

- Wideband Frequency, High Gain
- Excellent Directionality, linear Polarization
- Lightweight, high reliability, and long lifespan

**Applications:**

- Antenna Communication System
- Antenna Measurement and Calibration
- Research and Experimentation

**Electrical & Environmental Characteristics**

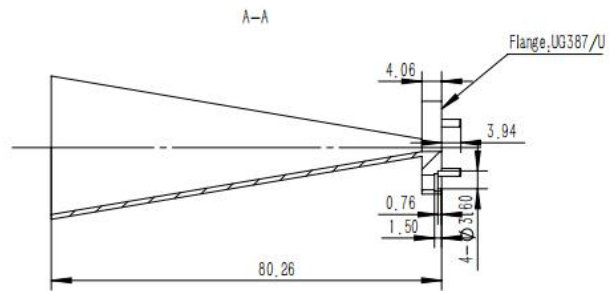
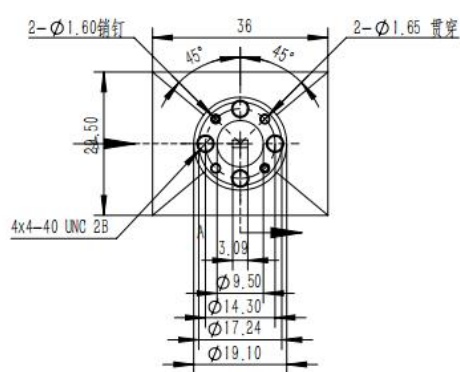
Frequency	60-90GHz
Gain	25 dB typical
VSWR	2.0 max
Polarization	Linear
E-Plane 3 dB Beamwidth	9.5 to 7.5 degrees
H-Plane 3 dB Beamwidth	11 to 8 degrees
Cross Polarization	-25dB max
Specification Temperature	+25°C
Operating Temperature	-40°C~+85°C

**Mechanical Specifications**

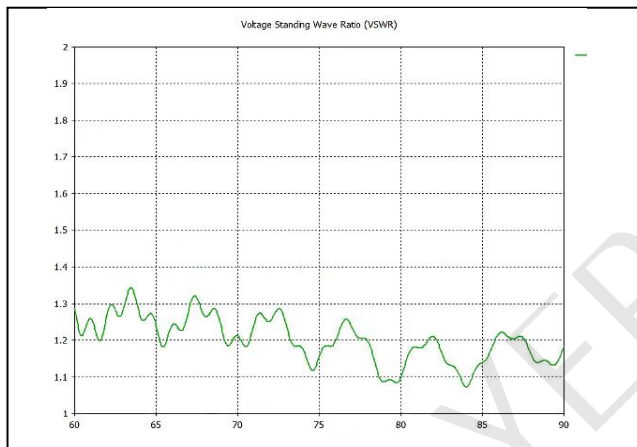
Antenna Port	WR12 Waveguide
Flange	UG387/U /optional
Material	Brass
Finishing Inside and Outside	Gold plating inside and outside
Size	φ19.10 x 80.26 mm
Weight (approx.)	/

**60-90GHz Standard Gain Horn Antenna with WR12 Waveguide Port P/N: YX-SGH12-25**

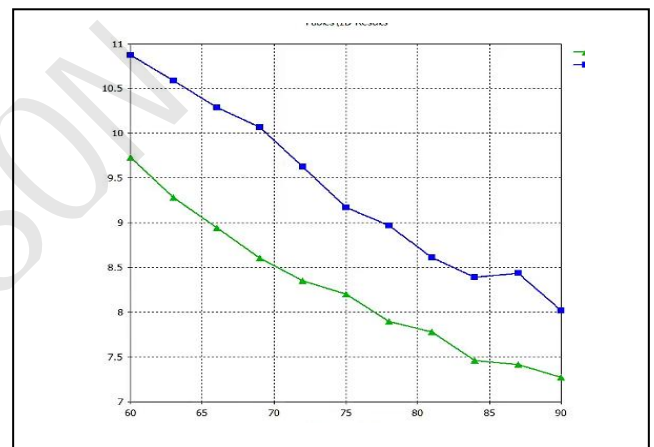
### Outline Drawing (Unit:mm)



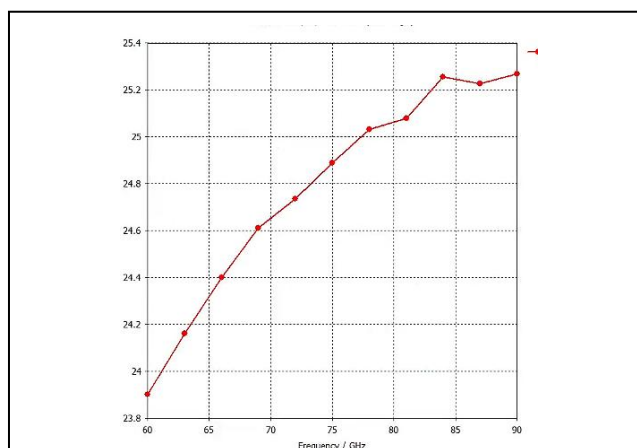
## VSWR VS Frequency



### 3dB Beamwidth



## Gain VS Frequency Plots



Notice:All of the aboving data is simulation for reference.

YERSON and its affiliates reserve the right to make changes to the products or information contained herein without prior notice. Please visit [www.yersontech.com](http://www.yersontech.com) for additional datasheets and product information.