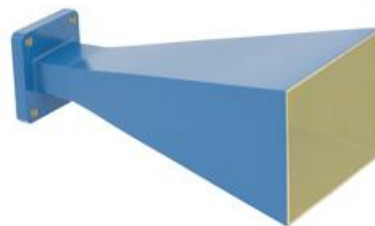


26.5-40GHz Standard Gain Horn Antenna with WR28 Waveguide Port P/N: YX-SGH28-25**Descriptions:**

Model **YX-SGH28-25** is a standard gain horn antenna that operates from 26.5 to 40 GHz, it is linear polarization, The RF port is equipped with waveguide flange which is optional.

**Features:**

- Wideband Frequency, High Gain
- Excellent Directionality, linear Polarization
- Lightweight, high reliability, and long lifespan

Applications:

- Antenna Communication System
- Antenna Measurement and Calibration
- Research and Experimentation

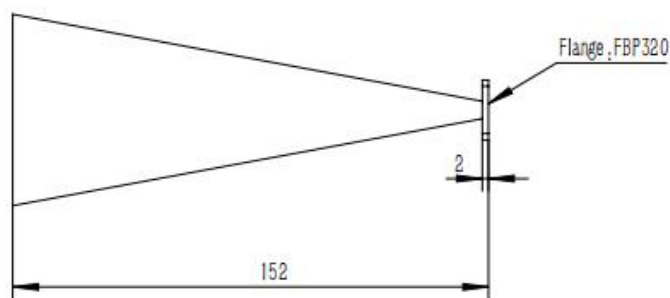
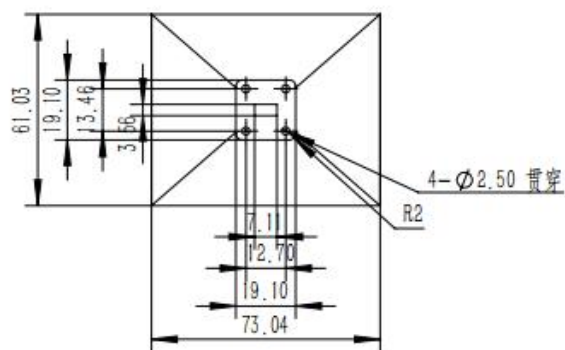
**Electrical & Environmental Characteristics**

Frequency	26.5-40GHz
Gain	25 dB typical
VSWR	1.25 max
Polarization	Linear
E-Plane 3 dB Beamwidth	10 to 6 degrees
H-Plane 3 dB Beamwidth	12 to 9 degrees
Cross Polarization	-25dB max
Specification Temperature	+25℃
Operating Temperature	-40℃~+85℃

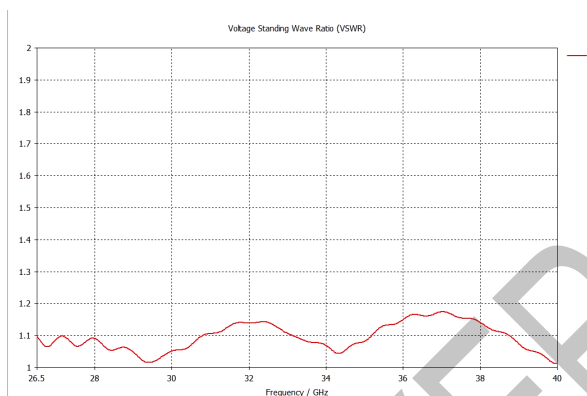
Mechanical Specifications

Antenna Port	WR28
Flange	FBP320(UBR320)/optional
Material	Aluminum/Brass
Finishing Inside and Outside	Chem Film Inside and Painting outside(Color Optional)
Size	61.03*73.04*152 mm
Weight (approx.)	/

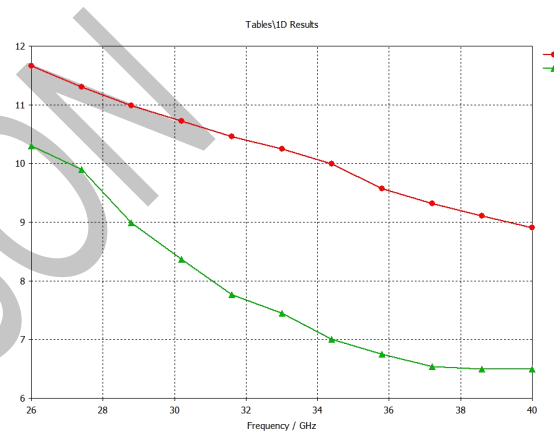
Outline Drawing(Unit:mm)



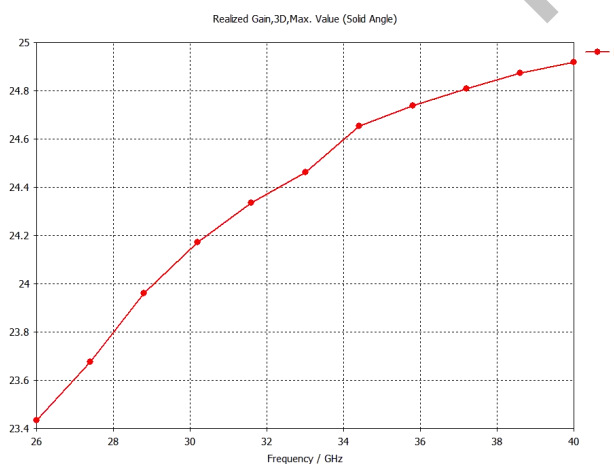
VSWR VS Frequency



3dB Beamwidth



Gain VS Frequency Plots



Notice: All of the above data is simulation for reference.

YERSON and its affiliates reserve the right to make changes to the products or information contained herein without prior notice. Please visit www.yersontech.com for additional datasheets and product information.