

**33-50GHz Standard Gain Horn Antenna with WR22 Wave-guide Port P/N: YX-SGH-22-15**
**Descriptions:**

Model **YX-SGH-22-15** is a standard gain horn antenna that operates from 33~ 50 GHz, it is linear polarization, The RF port is equipped with wave-guide flange which is optional.


**Features:**

- Wide-band Frequency, High Gain
- Excellent Directional, linear Polarization
- Lightweight, high reliability, and long lifespan

**Applications:**

- Antenna Communication System
- Antenna Measurement and Calibration
- Research and Experimentation


**Electrical & Environmental Characteristics**

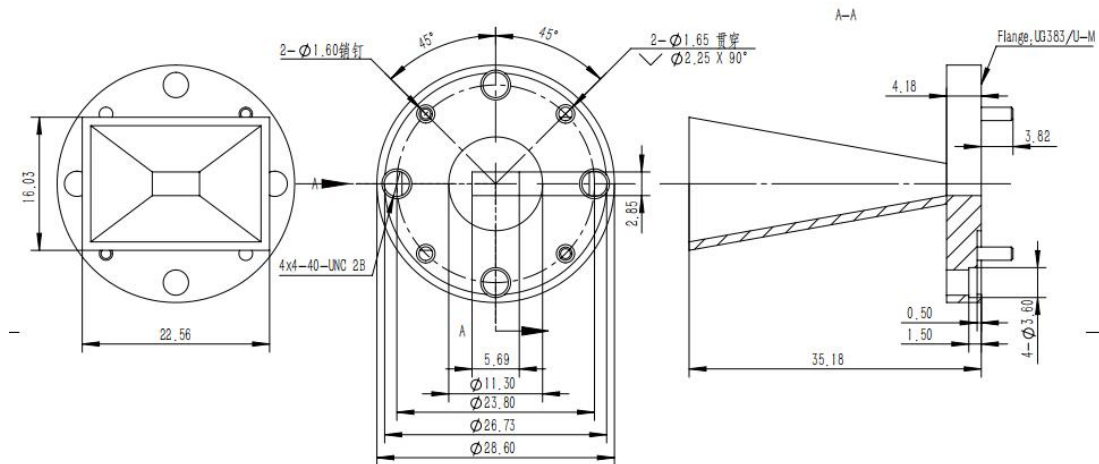
<b>Frequency</b>	33-50GHz
<b>Gain</b>	15 dB typical
<b>VSWR</b>	1.25 max
<b>Polarization</b>	Linear
<b>E-Plane 3dB Beam width</b>	30 to 20 degrees
<b>H-Plane 3dB Beam width</b>	31 to 21 degrees
<b>Cross Polarization</b>	-25dB max
<b>Specification Temperature</b>	+25°C
<b>Operating Temperature</b>	-40°C~+85°C

**Mechanical Specifications**

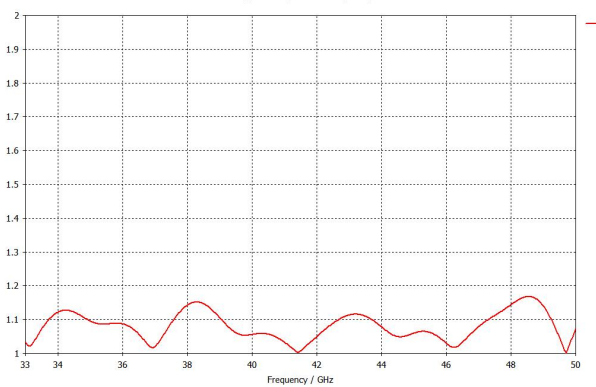
<b>Antenna port</b>	WR10 Waveguide
<b>Flange</b>	UG383/U-M
<b>Material</b>	Brass
<b>Finishing Inside and Outside</b>	Gold plating inside and outside
<b>Size</b>	φ 28.60*35.18mm
<b>Weight (approx.)</b>	/

**33~50GHz Standard Gain Horn Antenna with WR22 Wave-guide Port P/N: YX-SGH-22-15**

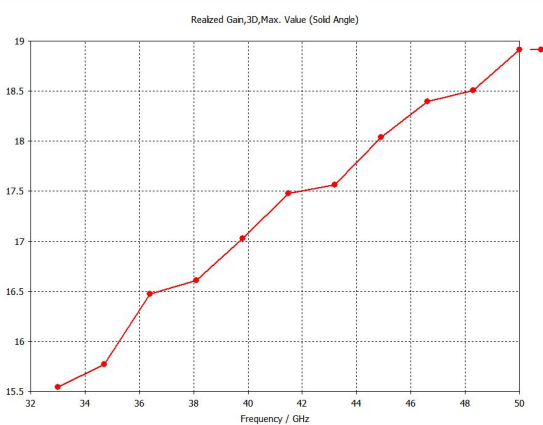
**Outline Drawing(Unit: mm):**



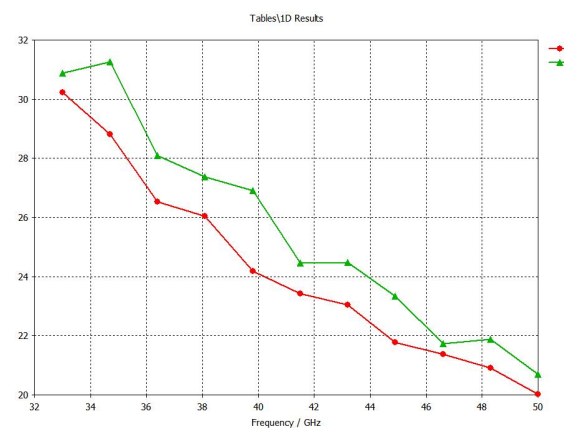
**VSWR VS Frequency**



**Gain VS Frequency Plots**



**3dB Beam width**



Notice: All of the aborning data is simulation for reference.

YERSON and its affiliates reserve the right to make changes to the products or information contained herein without prior notice. Please visit [www.yersontech.com](http://www.yersontech.com) for additional datasheets and product information.